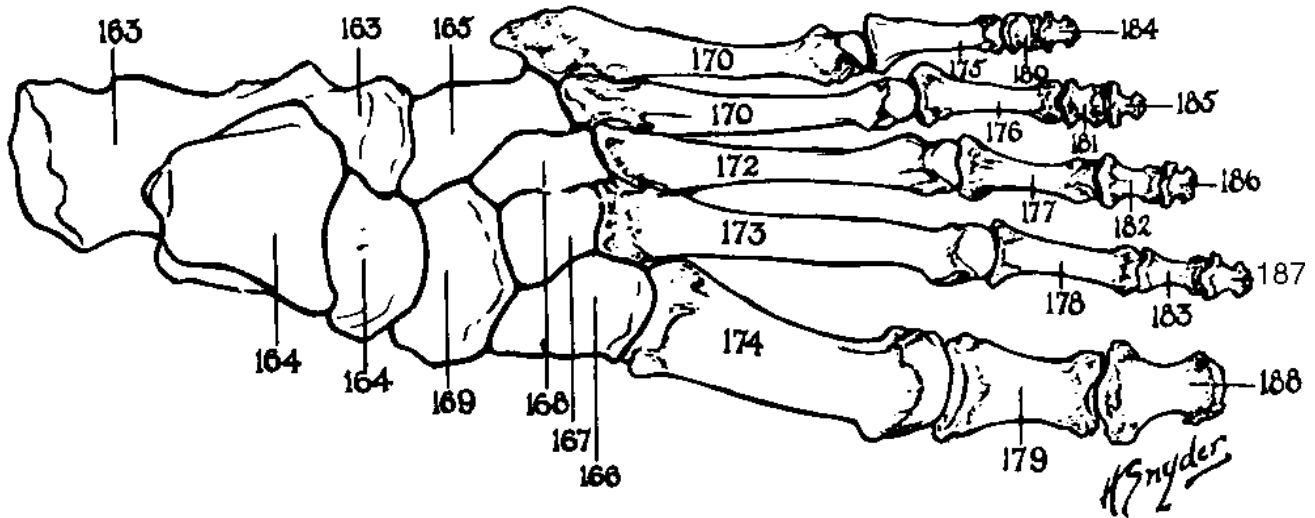
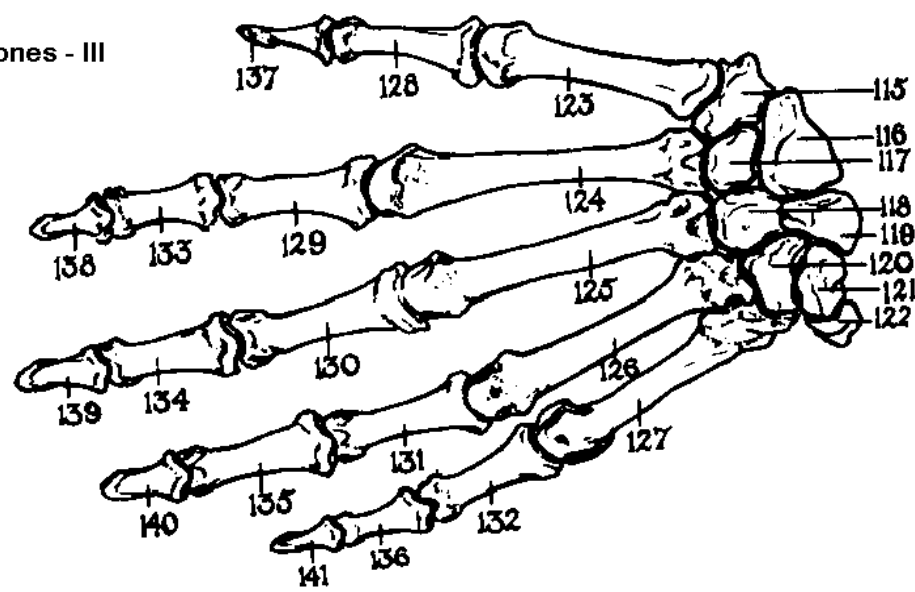


**Bones III-Hand and Foot**

Human - Bones - III



Carpal bones of the left wrist

- 115. Greater multangular
- 116. Navicular
- 117. Lesser multangular
- 118. Capitate
- 119. Lunate
- 120. Hamate
- 121. Triangular
- 122. Pisiform

- 123-127. Metacarpus
- 128-132. Phalanges 1st row
- 133-136. Phalanges 2nd row
- 137-141. Phalanges 3rd row or digits

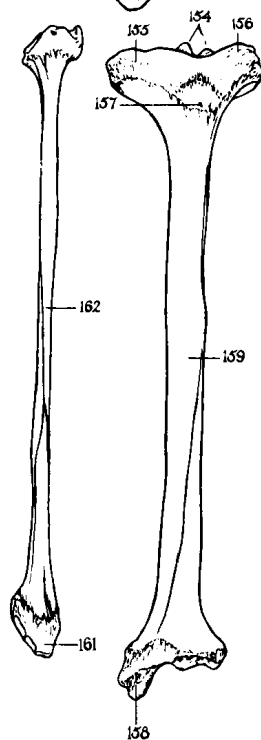
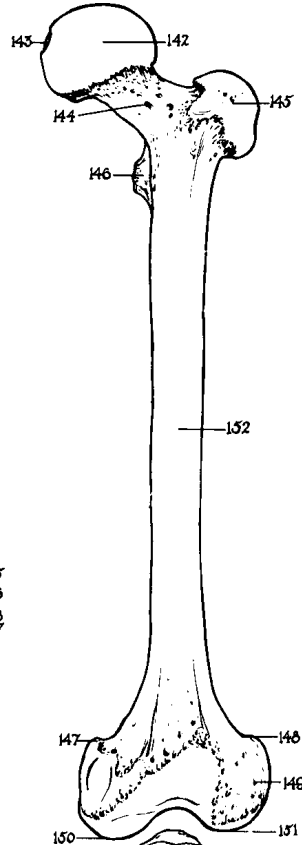
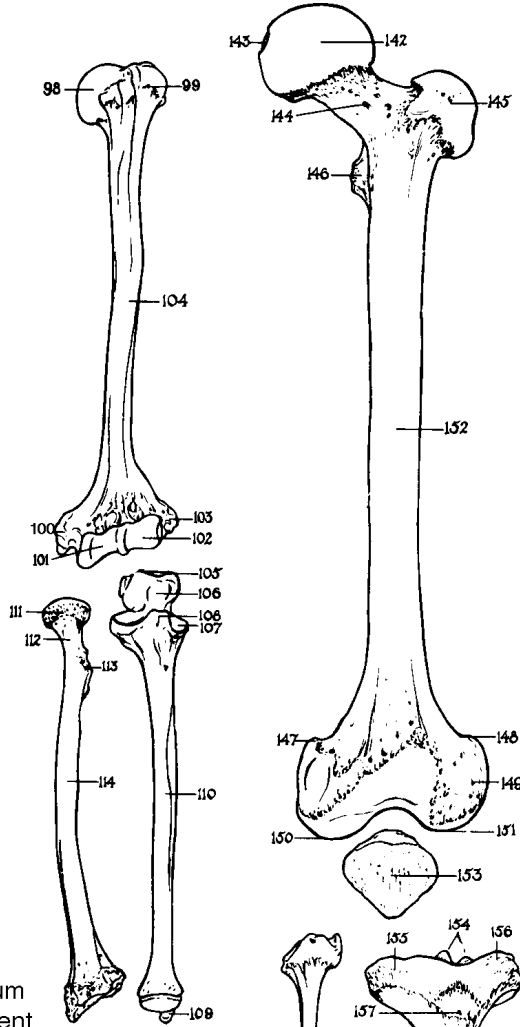
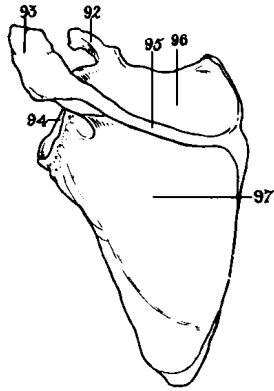
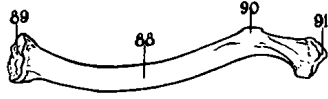
Tarsal bones of the left ankle

- 163. Calcaneus
- 164. Talus or astragalus
- 165. Cuboid
- 166. 1st cuneiform
- 167. 2nd cuneiform
- 168. 3rd cuneiform
- 169. Navicular

- 170-174. Metatarsus
- 175-179. Phalanges 1st row
- 180-183. Phalanges 2nd row
- 184-188. Phalanges 3rd row or digits

## Bones IV-Clavicle, Scapula, Arm and Leg

### Human - Bones - IV



Ulna  
 105. Olecranon  
 106. Semilunar notch  
 107. Radial notch  
 108. Coronoid process  
 109. Styloid process  
 110. Ulna

Radius  
 111. Head of radius  
 112. Neck  
 113. Radial tuberosity  
 114. Radius

Femur  
 142. Head  
 143. Fovea capitis femoris  
 144. Neck  
 145. Greater trochanter  
 146. Lesser trochanter  
 147. Adductor tubercle  
 148. Lateral epicondyle  
 149. Lateral epicondyle  
 150. Medial condyle  
 151. Lateral condyle  
 152. Femur

153. Patella

Tibia  
 154. Intercondyloid eminence  
 155. Medial condyle  
 156. Lateral condyle  
 157. Tuberosity  
 158. Medial malleolus  
 159. Tibia

Fibula  
 160. Styloid process  
 161. Lateral malleolus  
 162. Fibula

#### Clavicle

88. Clavicle  
 89. Articular surface with sternum  
 90. Tuberosity for conoid ligament  
 91. Articulates with acromion of scapula

#### Scapula

92. Coracoid process  
 93. Acromion  
 94. Glenoid cavity  
 95. Spine  
 96. Prescapular fossa  
 97. Postscapular fossa

#### Humerus

98. Head, articulates with glenoid cavity of scapula  
 99. Greater tubercle  
 100. Medial epicondyle  
 101. Trochlea  
 102. Capitulum  
 103. Lateral epicondyle  
 104. Humerus

Ward's Human Anatomy Clip Art

© 1991 WARD'S Natural Science Establishment, Inc.

All rights reserved.