

Class: **A&P Assessments**
Description:

Test: **Unit 3 - Skel. Notes**
Test Points: **212**
Test Number: **27589**
Printed: **26-October-09 07:35**

1) Which type of bone takes longer to repair?

- A compact
- B hematoma
- C spongy
- D hyaline
- E smooth

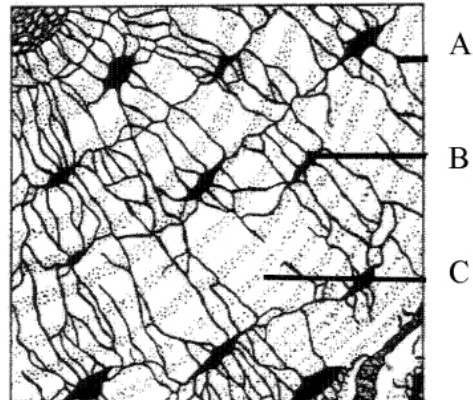
2) what do osteoclasts do for the bone?

- A give protein
- B repairs quickly
- C break down the bone
- D help epithelial tissue

3) Whats the more common form of ossification

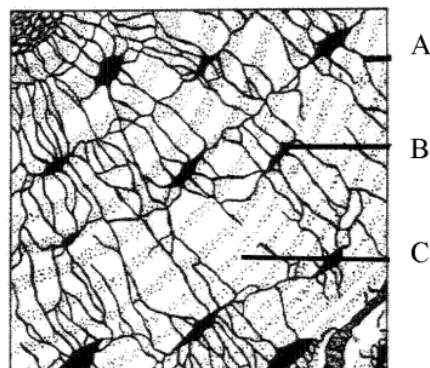
- A endochondrial
- B itsataco
- C intermembranous
- D osteogenesis

4) Which is the structure indicated by letter B?



- A Blood Vessle
- B Matrix
- C Osteocyte
- D Lamella

5) Which is the indicated by letter C?



- A Lamella
- B Epiphysial Plate
- C Osteocyte
- D none of these

6) What is found in the haversian canal?

- A _____ an osteocyte and its matrix
- B _____ Nothing at all
- C _____ an artery, an osteocyte and its canalicule
- D _____ An artery, a vein and a nerve

7) Which best describes spongy bone?

- A _____ cylindrical haversian systems
- B _____ lamella
- C _____ an osteocyte
- D _____ random bone plates. Many spaces.
- E _____ a marrow filled space

8) What is an osteocyte?

- A _____ Bone Cells
- B _____ Compact Bone
- C _____ Cartilage
- D _____ Spongy Bone

9) Where is the epiphysis located?

- A _____ in the medullary canal
- B _____ center of the bone
- C _____ in the bone marrow
- D _____ in the compact bone
- E _____ on the ends of the bone

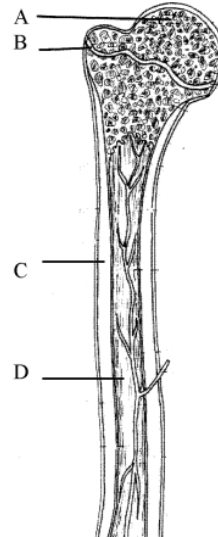
10) What part of the bone is the medullary canal located in?

- A _____ epiphysial plate
- B _____ diaphysis
- C _____ epiphysis

11) This is a Point and Click question. You must Click on the

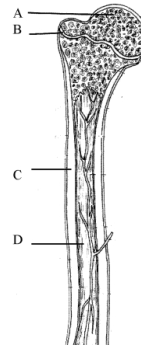
Media Button to see the image.

Click on the Medullary Cavity.



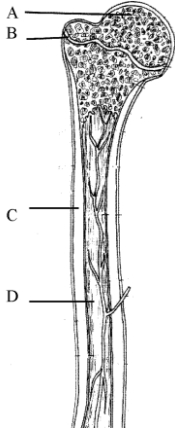
12) This is a Point and Click question. You must Click on the Media Button to see the image.

Click on a structure made of Spongy Bone.



13) This is a Point and Click question. You must Click on the Media Button to see the image.

Click on the location of the bone marrow.



14) Click on the media button to see the image for this question.

What type of fracture is this?



- A Comminuted
- B Greenstick
- C Avulsion
- D Stress

15) What fracture is more likely to cause soft tissue damage?

- A greenstick
- B stress
- C oblique
- D transverse

16) What is the patch of clotted blood around a fracture called?

- A framework
- B crust
- C death
- D callous

17) What fracture is the most common?

- A greenstick
- B oblique
- C Avulsion Fracture
- D Stress Fracture
- E Transverse Fracture

18) Who can only get greenstick fractures?

- A Elders
- B Mr. Eroh
- C Adults
- D Babies and Toddlers
- E Adolescent

19) Give an example of a long bone

- A patella
- B metacarple
- C triangular
- D capatate

20) Name one short bone

- A ribs
- B clavicle
- C patella
- D scapula
- E Talus

21) Which of these describes compact bone?

- A loosley arranged plates of bones
- B secrete bone plates
- C medullary canal
- D dense, arranged in haversian system
- E float in muscle