

Anatomy Test #1

Terminology and General Stuff

2005-06 (a)

Multiple Choice - Basic info

1. The study of human function is:
a. Physiology b. Genealogy c. Anatomy d. None of these
 2. Most terminology in this course is medical and:
a. Means nothing b. is named for dead guys
c. Is derived from Latin prefixes and suffixes
-

Matching - General relative anatomical terminology

A	B
3. Superficial	a. The main part
4. Inferior	b. Secondary branches
5. Anterior	c. Toward the feet
6. Peripheral	d. Palm up, face up
7. Visceral	e. Toward the front
	f. Farther from point of attachment
	g. Away from mid-line
	h. Toward an organ
	i. Close to point of attachment
	J. Toward the head
	k. Closer to the surface

Modified True (T) and False (F) - If False, replace the highlighted word with one that makes it a true statement. Make this correction in place of writing "F" or "False".

General anatomical terminology (anatomical directions)

8. The elbows are Proximal to the shoulders.
 9. The shoulders are Superior to the shins.
 10. The vertebral column (backbone) is Medial to the navel.
 11. The teeth are Deep to the lips.
 12. The heart is Medial to the lungs.
 13. Your palms are prone when they are typing (like I am now)
 14. Your feet are inferior to your ankles.
-

Completion - Levels of Organization

15. Many cells of one type is a (an):
 16. Many macromolecules make up a (an):
 17. An organ system is comprised of many:
-

Modified True (T) and False (F) - If False, replace the highlighted word with one that that makes it a true statement. Make this correction in place of writing "F" or "False".

Characteristics of Life

- 18. The common use of Metabolism (burning calories) is really just the Digestion part of Metabolism
 - 19. Three characteristics of all forms of life are reproduction, responsiveness, and growth.
 - 20. Assimilation is your body's ability to break large chunks of food into small molecules.
 - 21. Circulation, Respiration and Excretion are all sub-steps of Metabolism.
 - 22. Movement does not always mean something like walking.
 - 23. In part, Homeostasis is means "the adjustments your body has to make when the environment changes".
 - 24. An example of homeostasis in action would be: sweating because you are getting dehydrated on a hot day.
-

Matching - The requirements of life

- | | |
|--------------|--|
| 25. Food | a. Keeps chemicals dissolved |
| 26. Heat | b. Needed to Release Energy from sugar |
| 27. Oxygen | c. Directly proportional to metabolic rate |
| 28. Pressure | d. Supplies raw materials & energy |
| | e. None of these |
-

Lost Organs - Write the organs into the body cavities where they belong in the nasty, distorted person on the answer sheet. If they don't go in any cavity, write them in the homeless organs box to the left of the diagram.

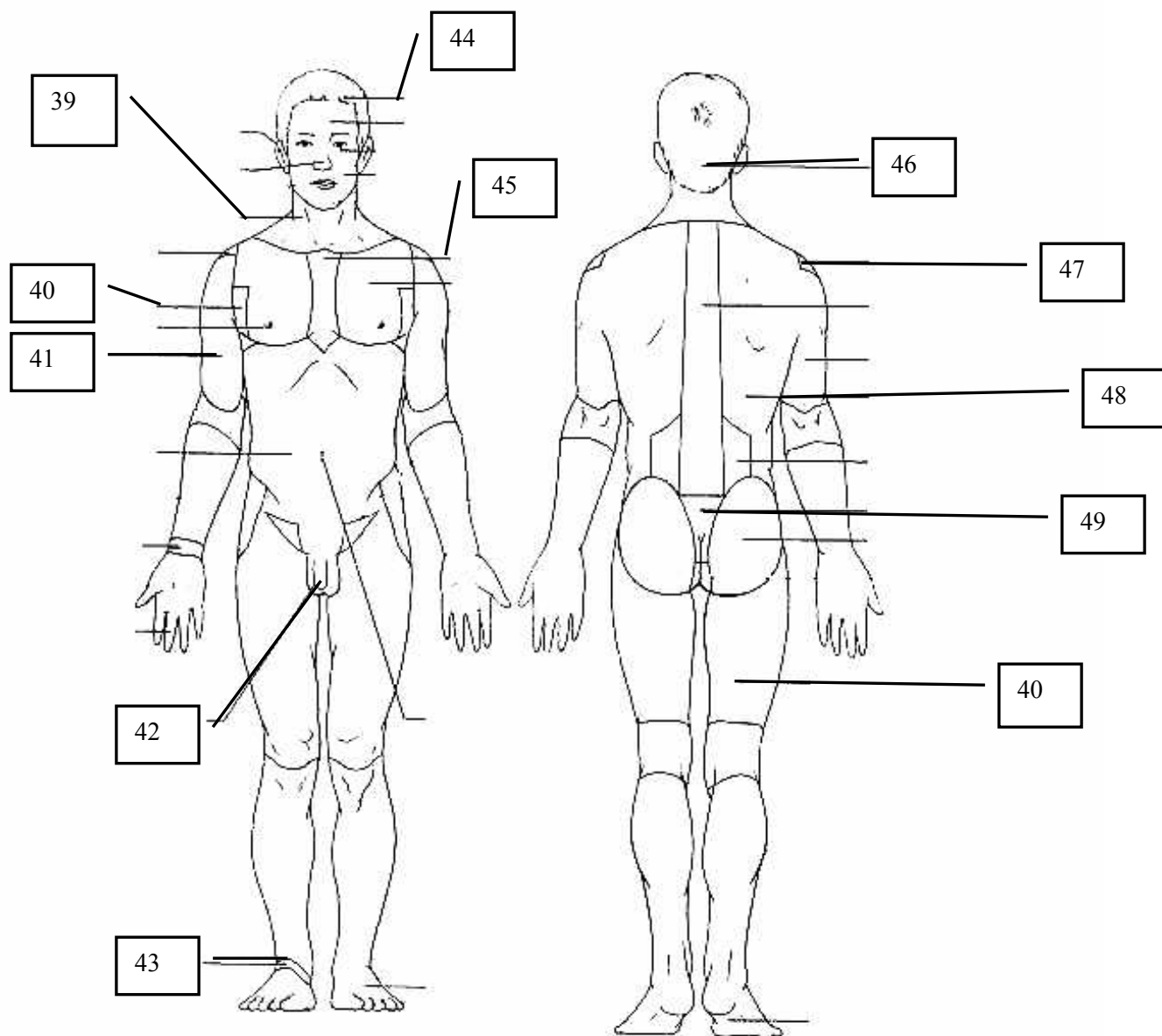
- | | |
|---------------|-----------------|
| 29. Spleen | 33. Spinal cord |
| 30. Vertebrae | 34. Eyes |
| 31. Ovaries | 35. Brain |
| 32. Heart | 36. Lungs |
-

Diagram - Body Planes

Sketch a picture of the cat in the supine position, as seen from above.

- 37. Draw a line on the cat depicting a transverse plane.
 - 38. Draw a line on the cat depicting a mid-sagittal plane.
-

39 - 50 Completion – Body Regions Diagram



Body Regions Word Bank

Return with the Test Please

Abdominal
Acromial
Axillary
Brachial
Buccal
Cephalic
Carpal
Cervical
Digital
Dorsum (dorsal)
Femoral
Frontal
Genital
Gluteal
Lumbar
Mammary
Nasal
Occipital
Orbital
Otic
Pectoral
Pedal
Plantar
Sacral
Sternal
Tarsal
Umbilical
Vertebral

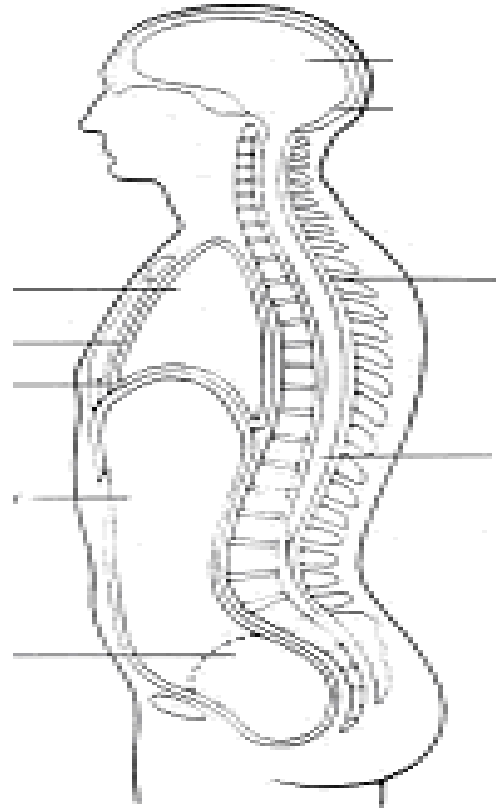
A&P Test 1

2005-2006(a)

Diagram for 29 - 36

1. _____
2. _____
3. _____
4. _____
5. _____
6. _____
7. _____
8. _____
9. _____
10. _____
11. _____
12. _____
13. _____
14. _____
15. _____
16. _____
17. _____
18. _____
19. _____
20. _____
21. _____
22. _____
23. _____
24. _____
25. _____
26. _____
27. _____
28. _____

Homeless Organs
Box



37. _____
38. _____
39. _____
40. _____
41. _____
42. _____
43. _____
44. _____
45. _____
46. _____
47. _____
48. _____
49. _____
50. _____

Body Plane Sketch
(38 & 39)