

Class: **Anatomy 14-15**
Description:

Test: **General Test 14-15**
Test Points: **300**
Test Number: **6205**
Printed: **24-September-14 15:12**

1) What is the term for toward body wall.

- A Medial
- B deep
- C central
- D Parietal
- E Distal

2) Which is superior to your chin?

- A Spine
- B Stomach
- C Eyes
- D Arms
- E Legs

3) What is the correct meaning of medial

- A Toward Organ
- B away from midline
- C The branches
- D Toward midline
- E main part

4) How do you correctly say the position of your navel to your spine?

- A distal
- B medial
- C anterior
- D inferior

5) What is the role of Epithelial Tissue

- A enzymes

- B _____ Covers the body surfaces
- C _____ communications
- D _____ movement
- E _____ framework

6) What organs are in the skeletal system?

- A _____ hands
- B _____ abdomen
- C _____ muscles
- D _____ heart
- E _____ bones

7) What tissue covers body surfaces?

- A _____ Scott
- B _____ Epithelial
- C _____ Muscle
- D _____ Connective
- E _____ Nerve

8) Which system breaks down and absorbs nutrients?

- A _____ Digestive
- B _____ Muscular
- C _____ Reproductive
- D _____ Excretory
- E _____ nervous

9) Which system exchanges gasses between the environment and the body?

- A _____ Respiratory
- B _____ Excretory
- C _____ Digestive
- D _____ Lymphatic
- E _____ Muscular

10) Which system serves as the bodies control system?

- A _____ Digestive
- B _____ Excretory
- C _____ Muscular
- D _____ Lymphatic
- E _____ nervous

11) The gallbladder is located in the

- A _____ cranial cavity
- B _____ Mediastinum cavity
- C _____ Thoracic cavity
- D _____ abdominal cavity

12) What cavity holds your lungs?

- A _____ cranial cavity
- B _____ vertebral cavity
- C _____ pelvic cavity
- D _____ abdominal cavity
- E _____ Pleural cavity

13) Which of these is located in the pelvic cavity?

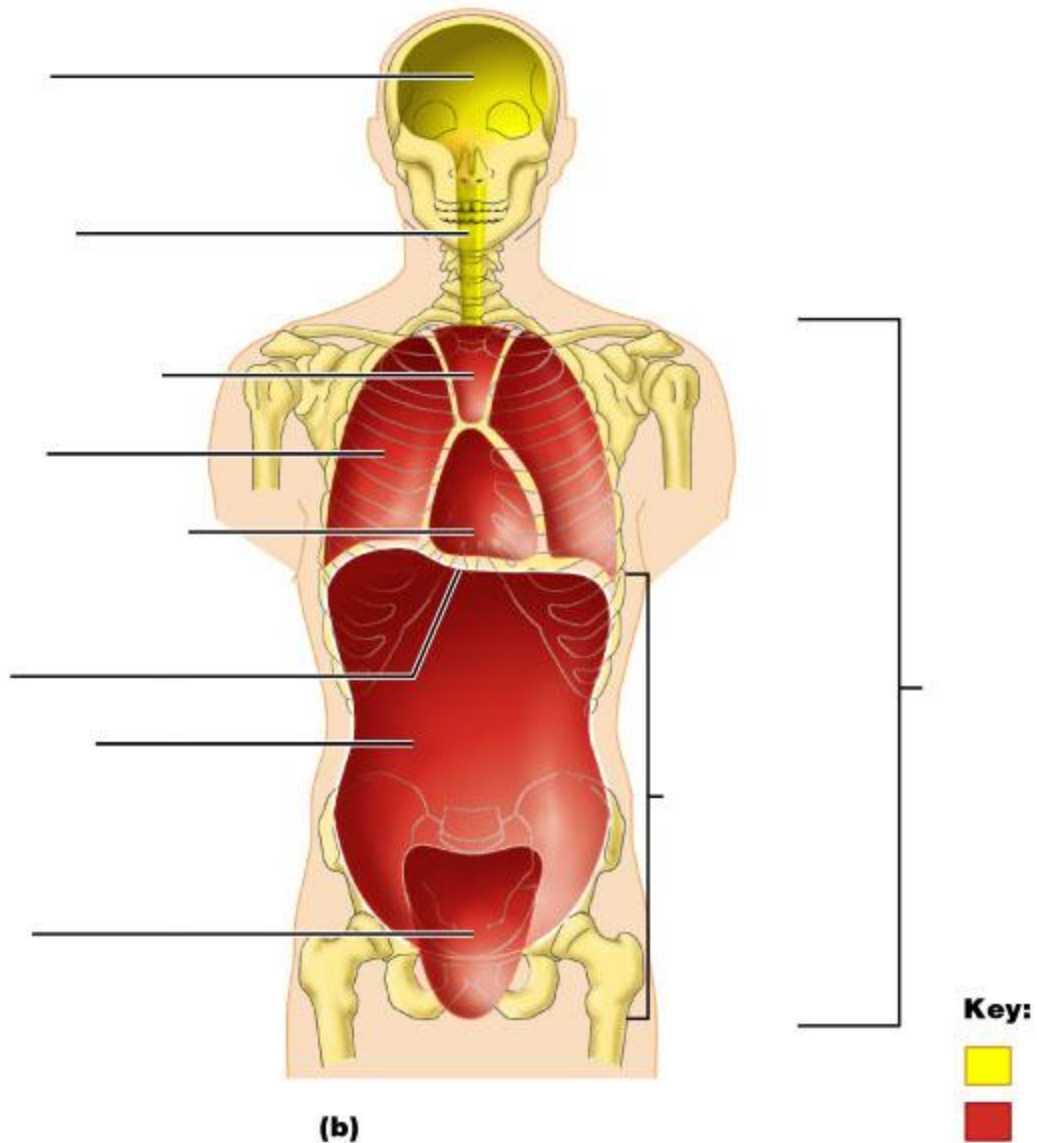
- A _____ Colon
- B _____ heart
- C _____ lungs
- D _____ Bladder
- E _____ shoulders

14) Where is the heart located?

- A _____ Thoracic cavity
- B _____ in your butt (see, I left this in there!)
- C _____ In the dorsal
- D _____ Next to your arm
- E _____ In your mouth

15) This is a Point and Click question. You must click on the "media" button to see the image.

Click on the cavity that contains the urinary bladder.



Copyright © 2004 Pearson Education, Inc., publishing as Benjamin Cummings.

16) What is the correct term for your upper arm?

- A _____ axillary
- B _____ occipital
- C _____ lumbar
- D _____ Brachial
- E _____ gluteal

17) What is the other name for the armpit?

- A _____ navicular
- B _____ wrist
- C _____ breast

D _____ axillary
E _____ lumbar

18) What is your femoral region?

A _____ arm
B _____ cervical
C _____ chest
D _____ Thigh
E _____ leg

19) What is your oral region?

A _____ Shoulder
B _____ mouth
C _____ forehead
D _____ leg
E _____ Finger

20) Thoracic refers to your _____.

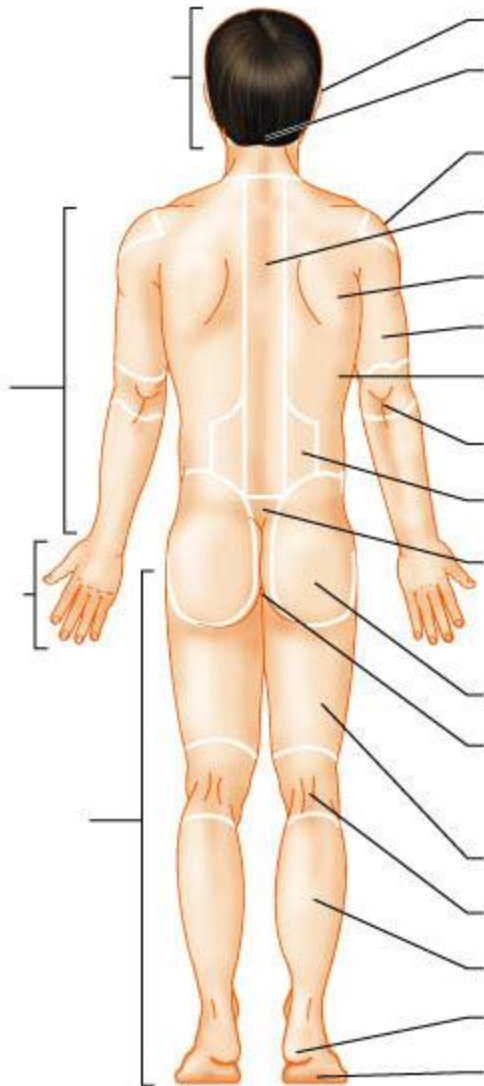
A _____ thigh
B _____ arm
C _____ neck
D _____ chest
E _____ pelvis

21) What is the name of the bottom of your feet?

A _____ Plantar
B _____ Pedal
C _____ Orbital
D _____ Lumbar
E _____ Frontal

22) This is a Point and Click question. You must click on the "media" button to see the image.

Click on the cephalic region.

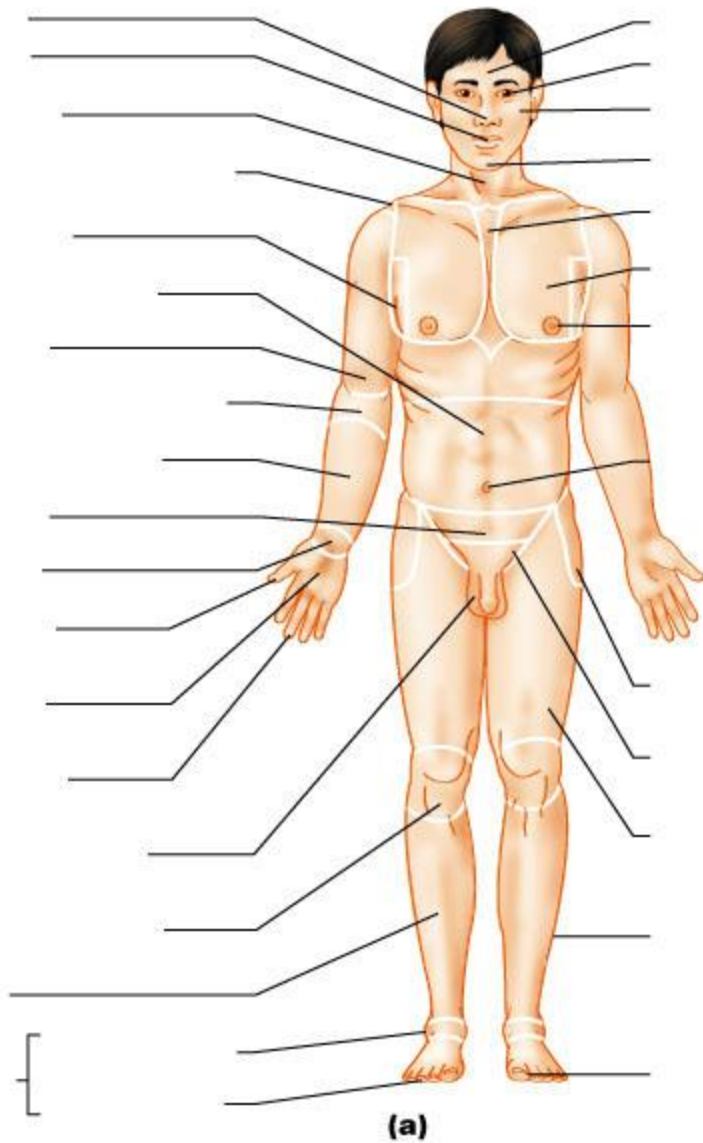


(b)

Copyright © 2004 Pearson Education, Inc., publishing as Benjamin Cummings.

23) This is a Point and Click question. You must click on the "media" button to see the image.

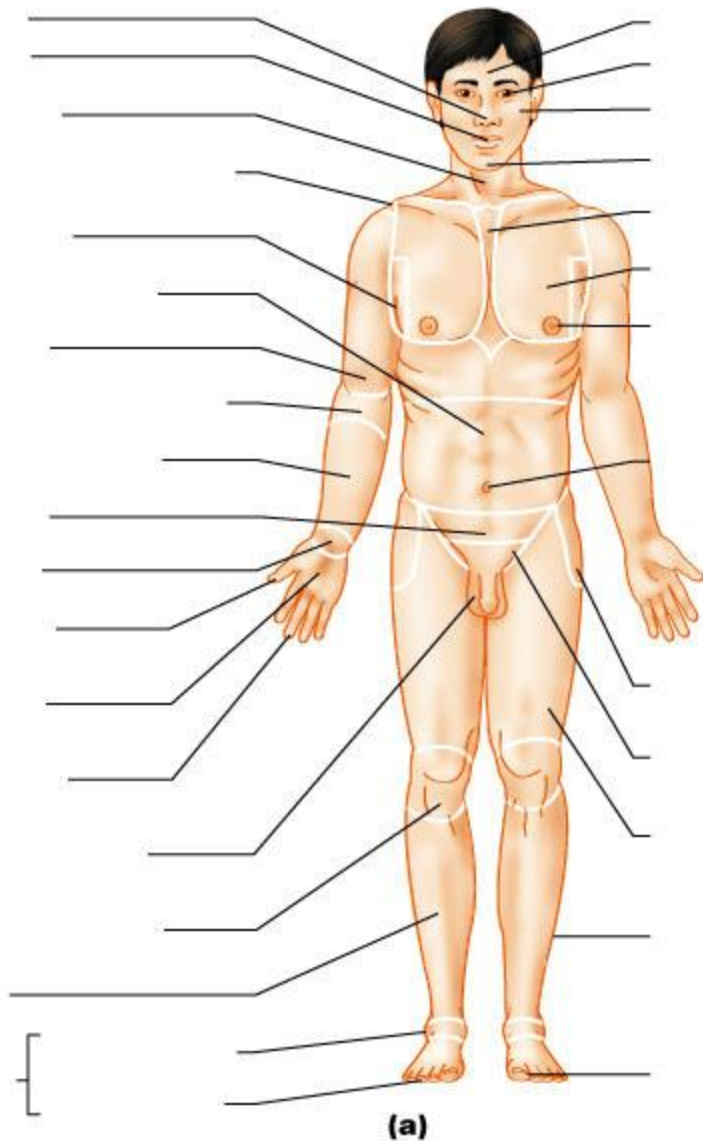
Click on the axillary region.



Copyright © 2004 Pearson Education, Inc., publishing as Benjamin Cummings.

24) This is a Point and Click question. You must click on the "media" button to see the image.

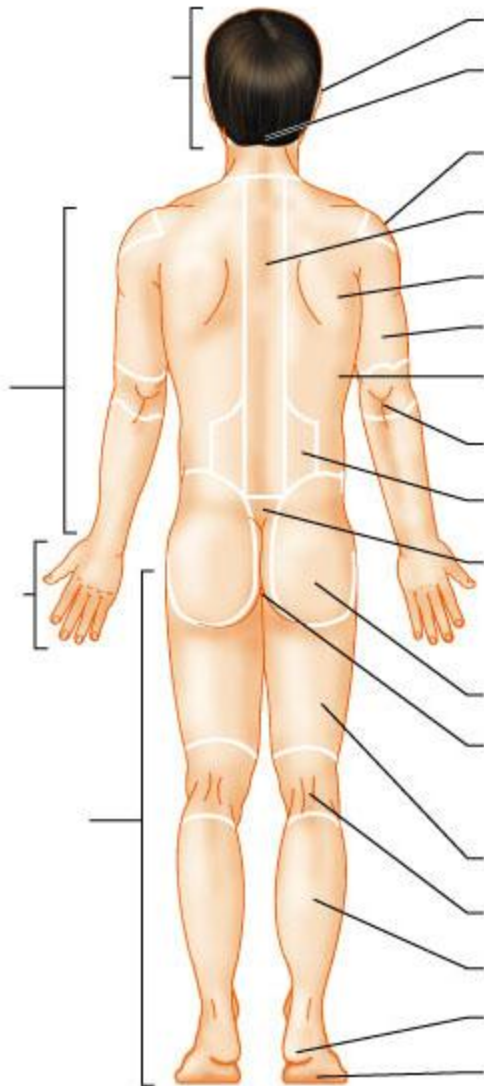
Click on the pelvic region.



Copyright © 2004 Pearson Education, Inc., publishing as Benjamin Cummings.

25) This is a Point and Click question. You must click on the "media" button to see the image.

Click on the acromial region.

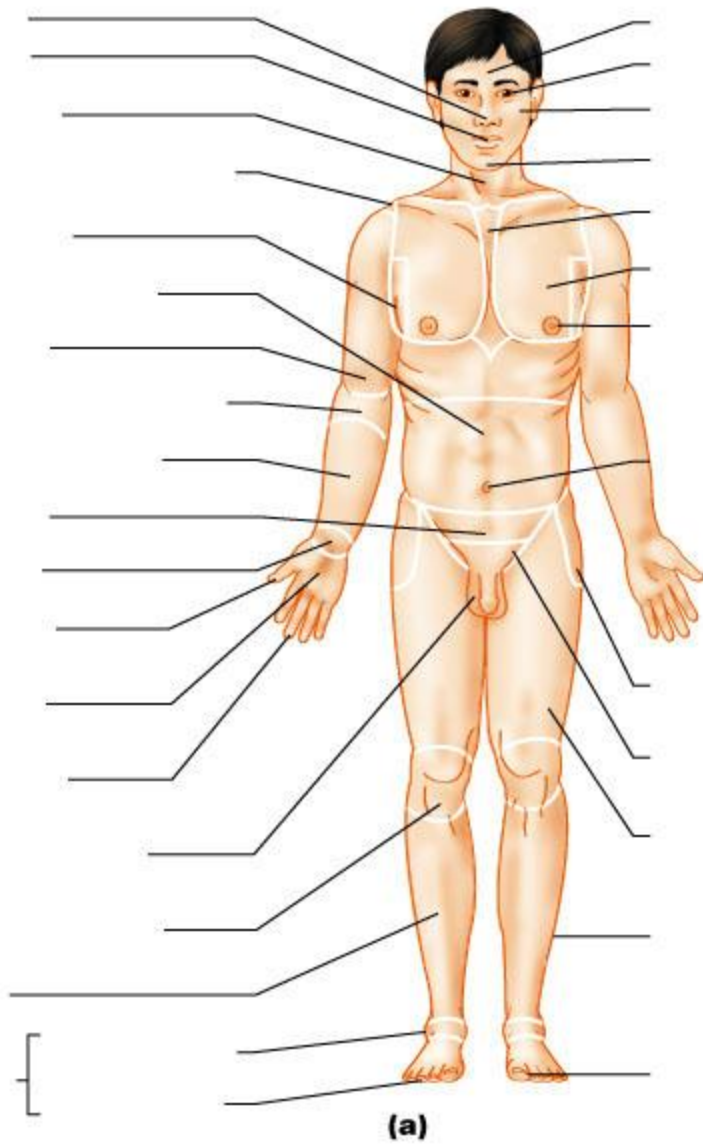


(b)

Copyright © 2004 Pearson Education, Inc., publishing as Benjamin Cummings.

26) This is a Point and Click question. You must click on the "media" button to see the image.

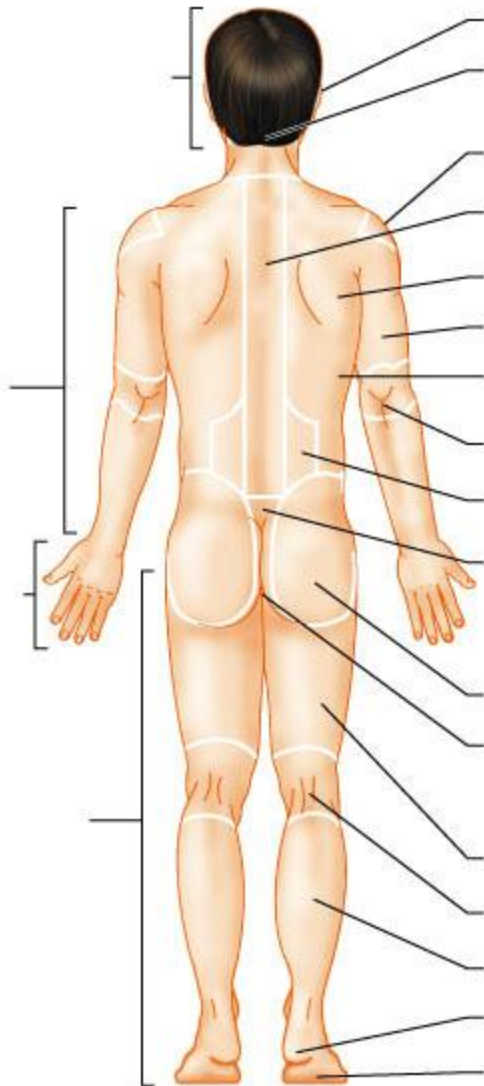
Click on the femoral region.



Copyright © 2004 Pearson Education, Inc., publishing as Benjamin Cummings.

27) This is a Point and Click question. You must click on the "media" button to see the image.

Click on the lumbar region.



(b)

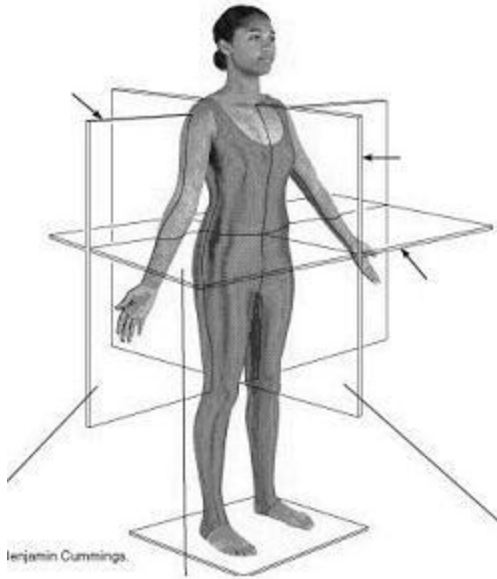
Copyright © 2004 Pearson Education, Inc., publishing as Benjamin Cummings.

28) The frontal plane is a cut into a:

- A** _____ front & back part
- B** _____ left & right part
- C** _____ top & bottom part

29) This is a Point and Click question. You must click the "media" button to see the image.

Click on the imaginary "wall" that is in a frontal plane?



30) Which of the following body parts would you slice in a mid-sagittal section?

- A** _____ leg
- B** _____ ear
- C** _____ nose
- D** _____ elbow