

Name: \_\_\_\_\_ Per \_\_\_\_\_ Date \_\_\_\_\_

---

Test: **General Test 14-15 Version C**

---

1) Which is superior to your chin?

- A \_\_\_\_\_ Ears
- B \_\_\_\_\_ Stomach
- C \_\_\_\_\_ Arms
- D \_\_\_\_\_ Legs
- E \_\_\_\_\_ Eyes

2) What is the correct example of Medial?

- A \_\_\_\_\_ Your pelvis is medial to your buttocks
- B \_\_\_\_\_ Your spine is medial to your hips
- C \_\_\_\_\_ Your butt is medial to your forehead
- D \_\_\_\_\_ Your Ear is medial to your face
- E \_\_\_\_\_ your Navel is medial to your chin

3) What direction is your spine in relation to your navel (belly button)?

- A \_\_\_\_\_ Anterior
- B \_\_\_\_\_ posterior
- C \_\_\_\_\_ medial
- D \_\_\_\_\_ inferior

4) Your heart is \_\_\_\_\_ (direction) to your urinary bladder.

- A \_\_\_\_\_ prone
- B \_\_\_\_\_ superior
- C \_\_\_\_\_ posterior
- D \_\_\_\_\_ anterior

5) Which of the following does your muscle system do for your body?

- A \_\_\_\_\_ Help you breathe
- B \_\_\_\_\_ Help you move
- C \_\_\_\_\_ Improve your intelligence
- D \_\_\_\_\_ Make you feel
- E \_\_\_\_\_ Digest Food

6) What organs are in the endocrine system?

- A \_\_\_\_\_ brain
- B \_\_\_\_\_ muscles
- C \_\_\_\_\_ heart
- D \_\_\_\_\_ glands
- E \_\_\_\_\_ stomach

7) What is a tissue made of?

- A \_\_\_\_\_ Cells
- B \_\_\_\_\_ Atoms
- C \_\_\_\_\_ Molecules
- D \_\_\_\_\_ Organs

8) What tissue covers body surfaces?

- A \_\_\_\_\_ Muscle
- B \_\_\_\_\_ Nerve
- C \_\_\_\_\_ Epithelial
- D \_\_\_\_\_ Scott
- E \_\_\_\_\_ Connective

9) Which system exchanges gasses between the environment and the body?

- A \_\_\_\_\_ Lymphatic
- B \_\_\_\_\_ Muscular
- C \_\_\_\_\_ Excretory
- D \_\_\_\_\_ Digestive
- E \_\_\_\_\_ Respiratory

10) Which system provides support, protection for the rest of the body?

- A \_\_\_\_\_ Skeletal
- B \_\_\_\_\_ Lymphatic
- C \_\_\_\_\_ nervous
- D \_\_\_\_\_ Muscular
- E \_\_\_\_\_ Digestive

11) What cavity holds your lungs?

- A \_\_\_\_\_ cranial cavity
- B \_\_\_\_\_ abdominal cavity
- C \_\_\_\_\_ vertebral cavity
- D \_\_\_\_\_ Pleural cavity
- E \_\_\_\_\_ pelvic cavity

14) Write the number 14 on the line pointing to the Cranial cavity.

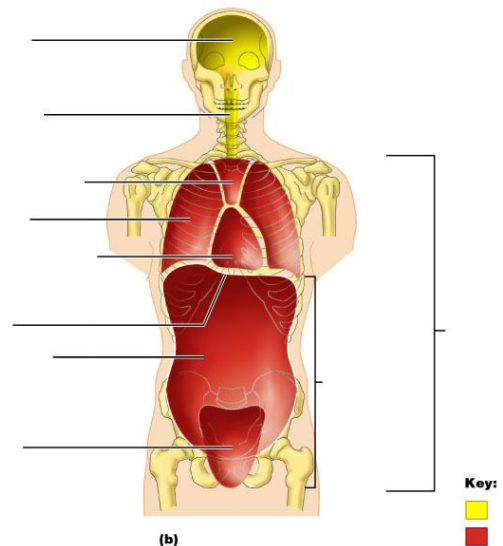
15) Write the number 15 on the line pointing to the cavity that contains the stomach.

12) Which of these is located in the pelvic cavity?

- A \_\_\_\_\_ shoulders
- B \_\_\_\_\_ lungs
- C \_\_\_\_\_ Colon
- D \_\_\_\_\_ heart
- E \_\_\_\_\_ Bladder

13) Where is the heart located?

- A \_\_\_\_\_ Thoracic cavity
- B \_\_\_\_\_ pelvic cavity
- C \_\_\_\_\_ abdominal cavity
- D \_\_\_\_\_ mediastinum
- E \_\_\_\_\_ dorsal cavity



16) What is the name for your upper arm?

- A \_\_\_\_\_ Brachial
- B \_\_\_\_\_ otic
- C \_\_\_\_\_ umbilical
- D \_\_\_\_\_ fibular
- E \_\_\_\_\_ orbital

17) What area does nasal describe?

- A \_\_\_\_\_ neck
- B \_\_\_\_\_ eye
- C \_\_\_\_\_ Back of head
- D \_\_\_\_\_ nose
- E \_\_\_\_\_ forehead

18) What is the correct term for your thigh?

- A \_\_\_\_\_ occipital
- B \_\_\_\_\_ gluteal
- C \_\_\_\_\_ Brachial
- D \_\_\_\_\_ femoral
- E \_\_\_\_\_ lumbar

19) What is the region commonly called your ankle?

- A \_\_\_\_\_ carpal
- B \_\_\_\_\_ thoracic
- C \_\_\_\_\_ oral
- D \_\_\_\_\_ tarsal
- E \_\_\_\_\_ cephalic

22) Write the number 22 on the line pointing to the carpal region.

23) Write the number 23 on the line pointing to the cervical region.

24) Write the number 24 on the line pointing to the axillary region.

25) Write the number 25 on the line pointing to the gluteal region.

26) Write the number 26 on the line pointing to the calcaneal region.

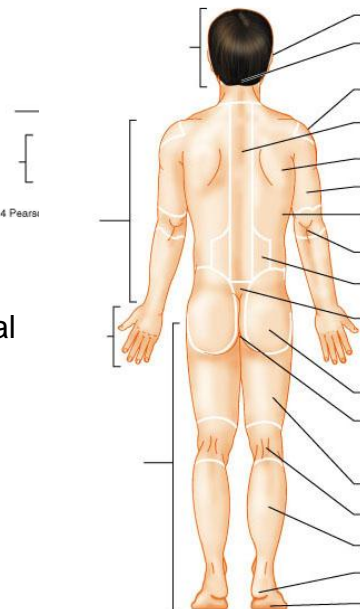
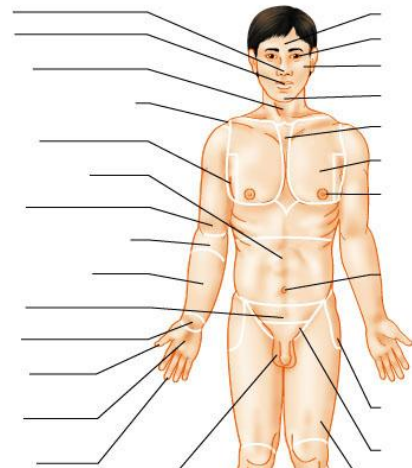
27) Write the number 27 on the line pointing to the dorsal region.

20) Pedal refers to your \_\_\_\_\_.

- A \_\_\_\_\_ pelvis
- B \_\_\_\_\_ arm
- C \_\_\_\_\_ neck
- D \_\_\_\_\_ chest
- E \_\_\_\_\_ foot

21) What is the name of the toest?

- A \_\_\_\_\_ Frontal
- B \_\_\_\_\_ phalangeal
- C \_\_\_\_\_ Palmar
- D \_\_\_\_\_ Orbital
- E \_\_\_\_\_ Pedal



Copyright © 2004 Pearson Education, Inc., publishing as Benjamin Cummings.

(b)

Copyright © 2004 Pearson Education, Inc., publishing as Benjamin Cummings.

**28)** Which of the following body parts would you slice in a mid-sagittal section?

- A \_\_\_\_\_ elbow
- B \_\_\_\_\_ ear
- C \_\_\_\_\_ leg
- D \_\_\_\_\_ nose

**29)** Which plane would cut off the tip of your nose?

- A \_\_\_\_\_ sagittal plane
- B \_\_\_\_\_ tranverse plane
- C \_\_\_\_\_ frontal plane
- D \_\_\_\_\_ mid-sagittal plane

**30)** What is a transverse plane?

- A \_\_\_\_\_ lengthwise in some plane other than sagittal or frontal
- B \_\_\_\_\_ To cut into top and bottom part
- C \_\_\_\_\_ divide body into front and back
- D \_\_\_\_\_ to cut into left and right part
- E \_\_\_\_\_ to cut into equal left and right halves