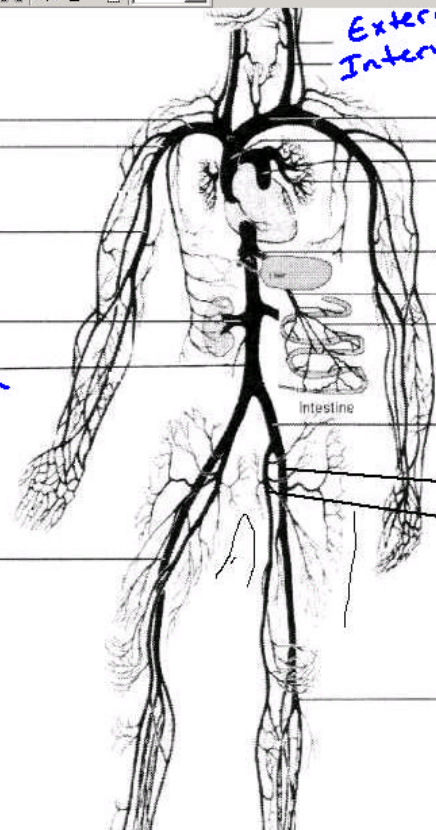


Subclavian  
Axillary  
Brachial  
Renal  
Inf. Vena cava  
Femoral



External Jugular  
Internal Jugular  
Brachiocephalic (Imominate)  
Sup. Vena Cava  
Pulmonary Trunk  
Pulmonary vein  
Hepatic Portal mesenteric  
Common iliac  
Ext. Iliac  
Int. Iliac  
Popliteal

Intestine