

Pregnancy

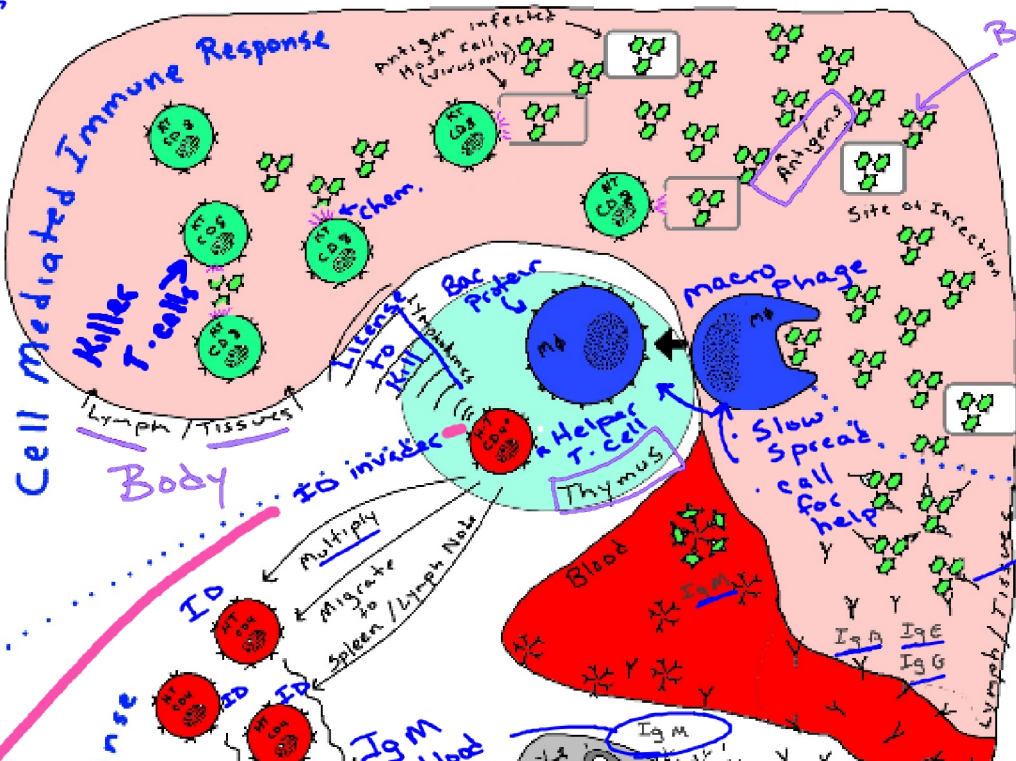
Ig E - cross placenta
protect baby (2 wks after
birth)

Ig A - Milk

The Aquired Immune Response

Killer T
- Kill invaders
- Told to

Cell Mediated Immune Response
Killer T-cells
Lymph / Tissues



- Protein that attract

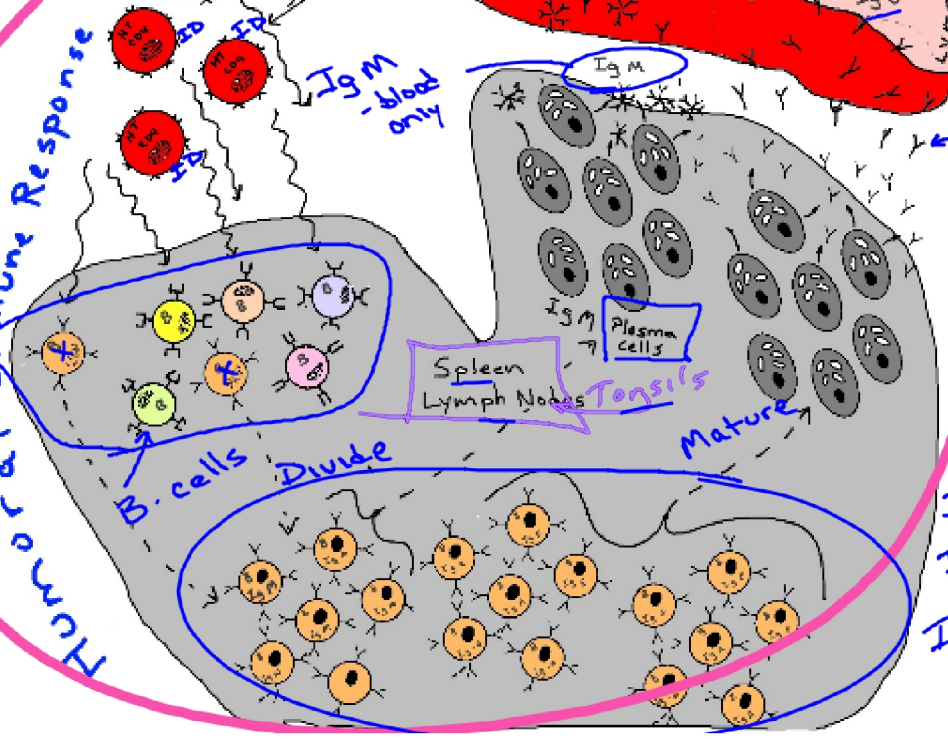
Stick to antigen.
- Holds them down
- Marks them for death.

Antibodies
Proteins that attack one antigen.

- Immunoglobulin I₅
- Ig G - Tissues
- Ig A - Secretions
- Ig E - Eukaryotes Allergies

2 days

Humoral Immune Response



to invade
to kill
to kill

Ig M - blood only

Spleen
Lymph Nodes
Tonsils

Mature

Plasma cells

Ig M

Ig G

Ig A

Ig E

Ig M

Ig G

Ig A

Ig E

Ig M

Ig G

Ig A

Ig E

Ig M

Ig G

Ig A

Ig E

Ig M

Ig G

Ig A

Ig E

Ig M

Ig G

Ig A