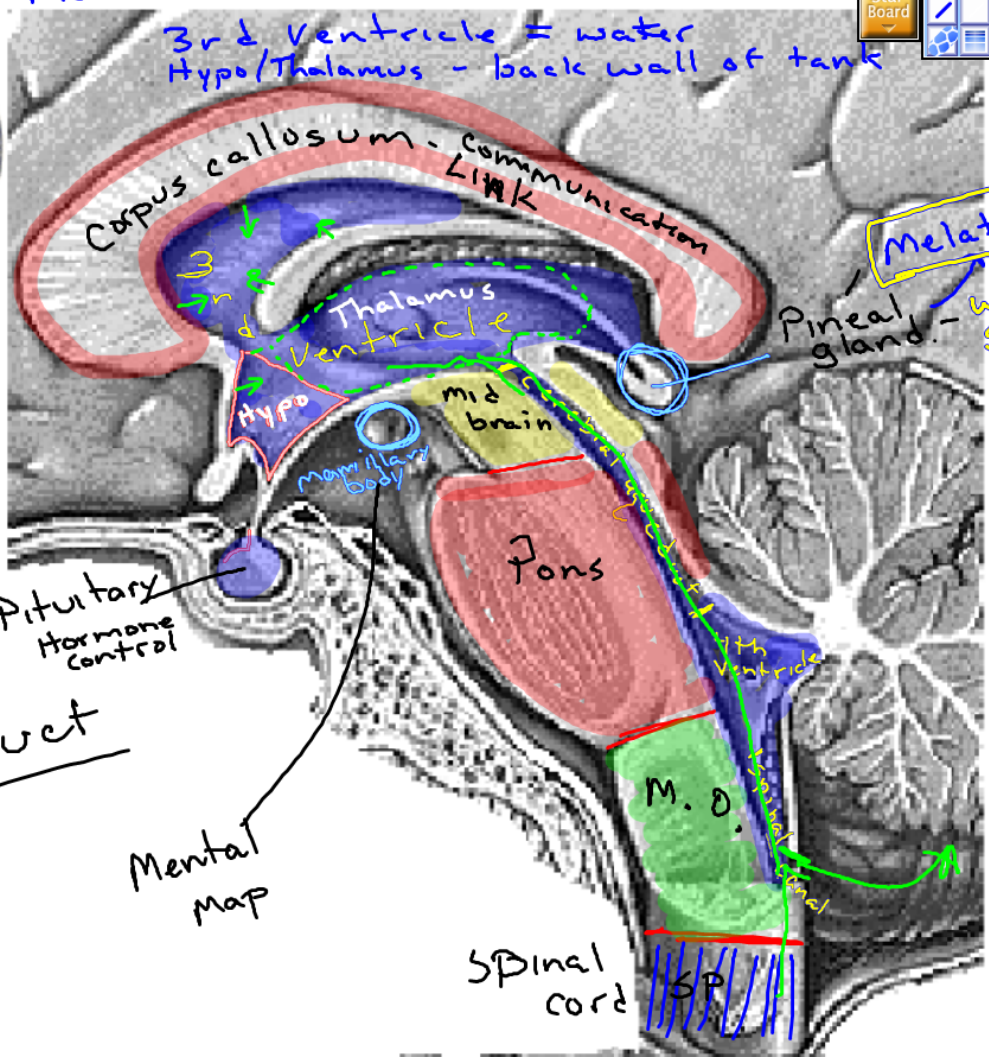


Fishtank

3rd Ventricle = water
Hypo/Thalamus - back wall of tank



Label these structures on the enlarged view.



Corpus callosum - communication Link

Thalamus Ventricle

Hypo
Mammillary body

mid brain

Pons

4th Ventricle

M.O.

Spinal cord

Melatonin

Pineal gland - Wake/Sleep

Hydrocephalus
Hydrocephalic

aqueduct

Mental map

Pituitary
Hormone control